

PART OF SEC. 29-30, T.7N., R.3E., S.L.B. & M.
EVERGREEN PARK SUBDIVISION NO. 1
LOTS 283-285, 406-413, 491-497, 521-530

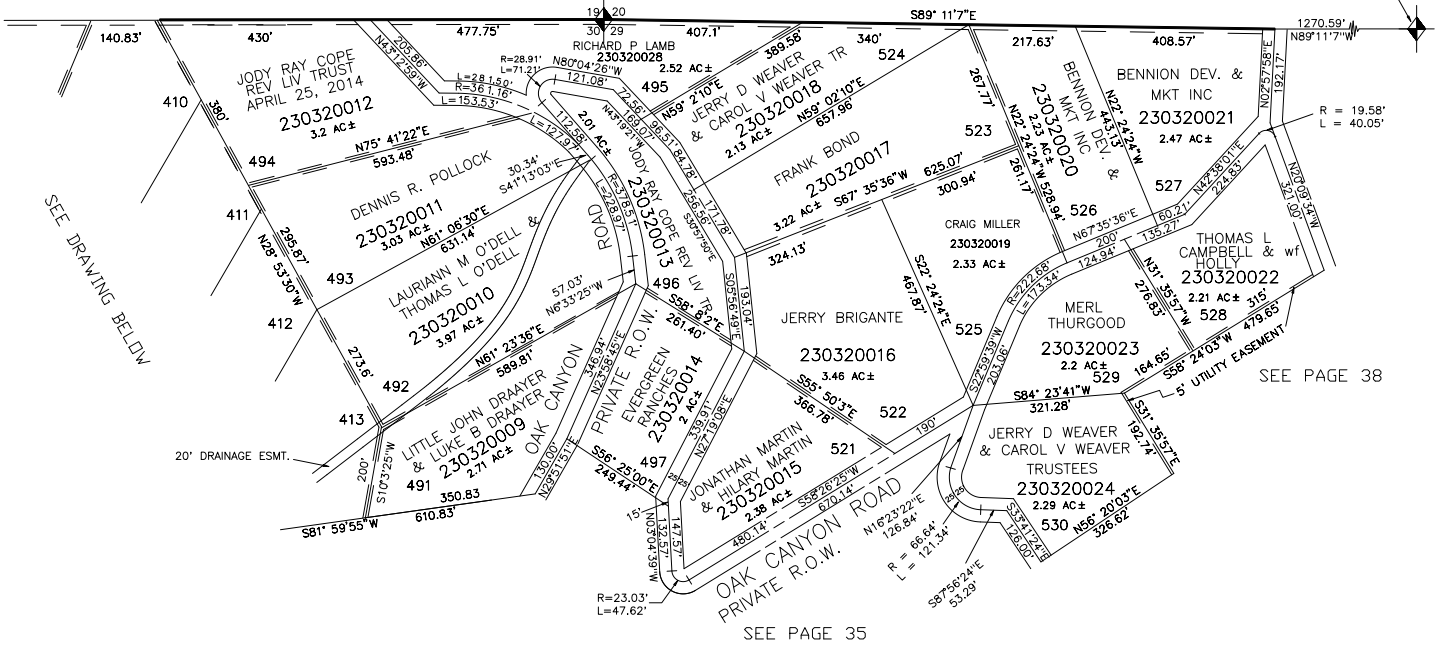
TAXING UNIT: 58

IN WEBER COUNTY

SCALE 1" = 200'

SEE PAGE 13

N. 1/4 SEC. T7N., R.3E.

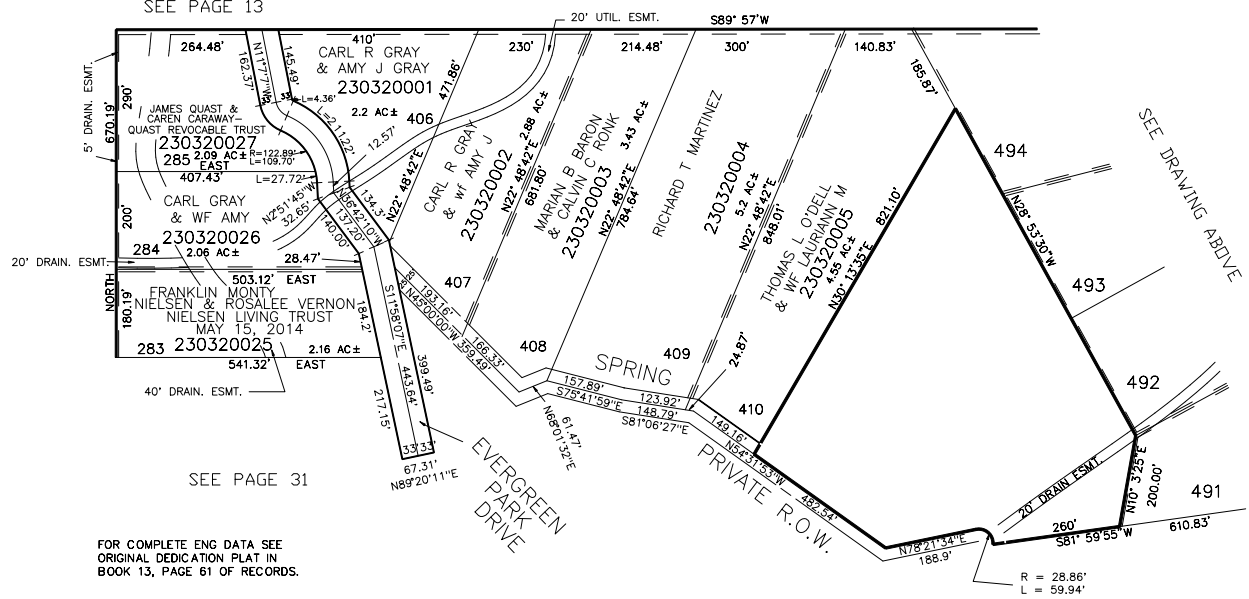


SEE DRAWING BELDW

SEE PAGE 38

SEE PAGE 35

SEE PAGE 13



FOR COMPLETE ENG DATA SEE ORIGINAL DEDICATION PLAT IN BOOK 13, PAGE 61 OF RECORDS.

ALL DASHED LINES SHOWN ON LOT LINES ARE 10' UTILITY EASEMENTS UNLESS OTHERWISE NOTED.

SEE PAGE 35